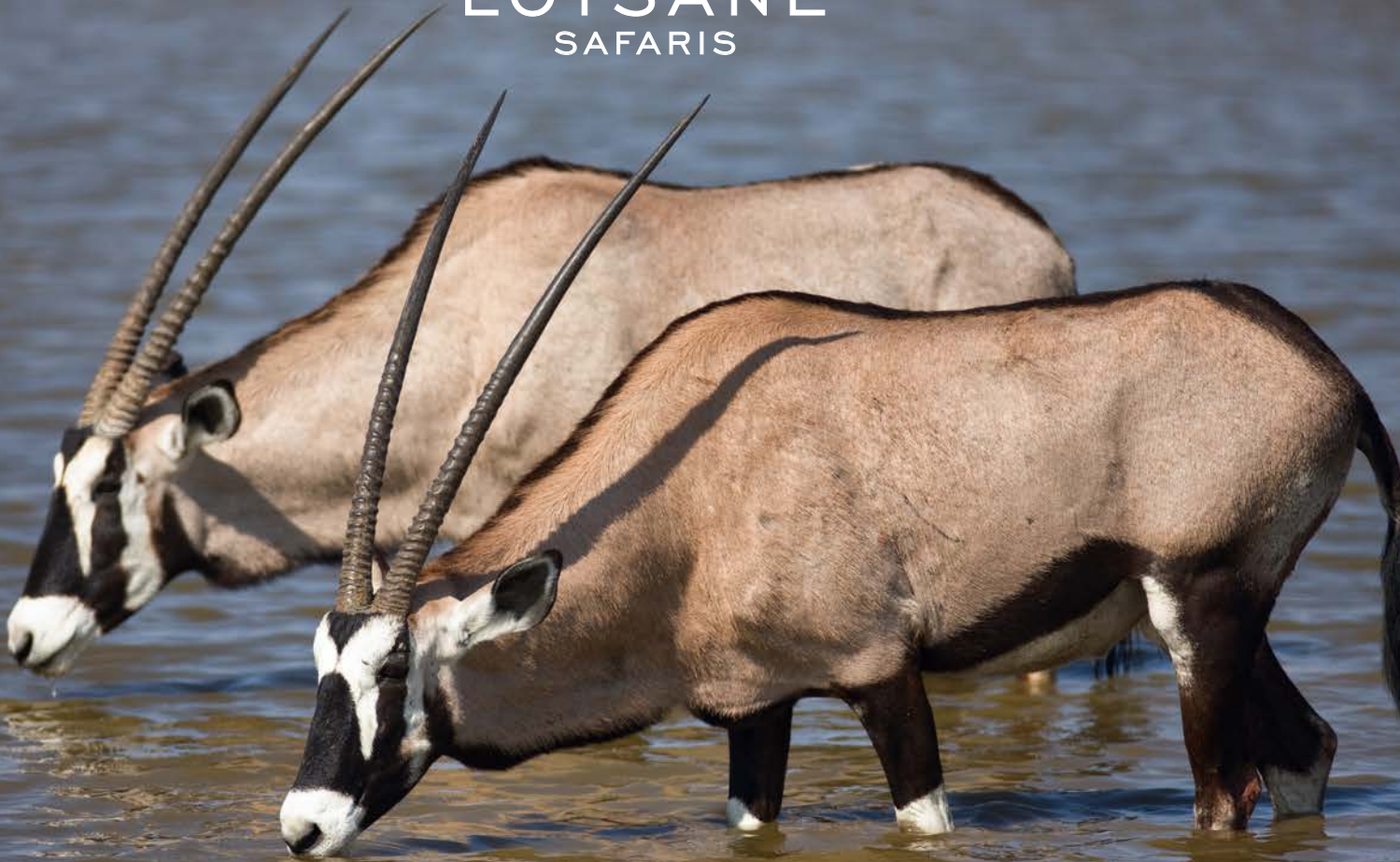




LOTSANE  
SAFARIS



BOTSWANA IS THE SWITZERLAND OF AFRICA

# Lotsane is a Jewel in her Crown



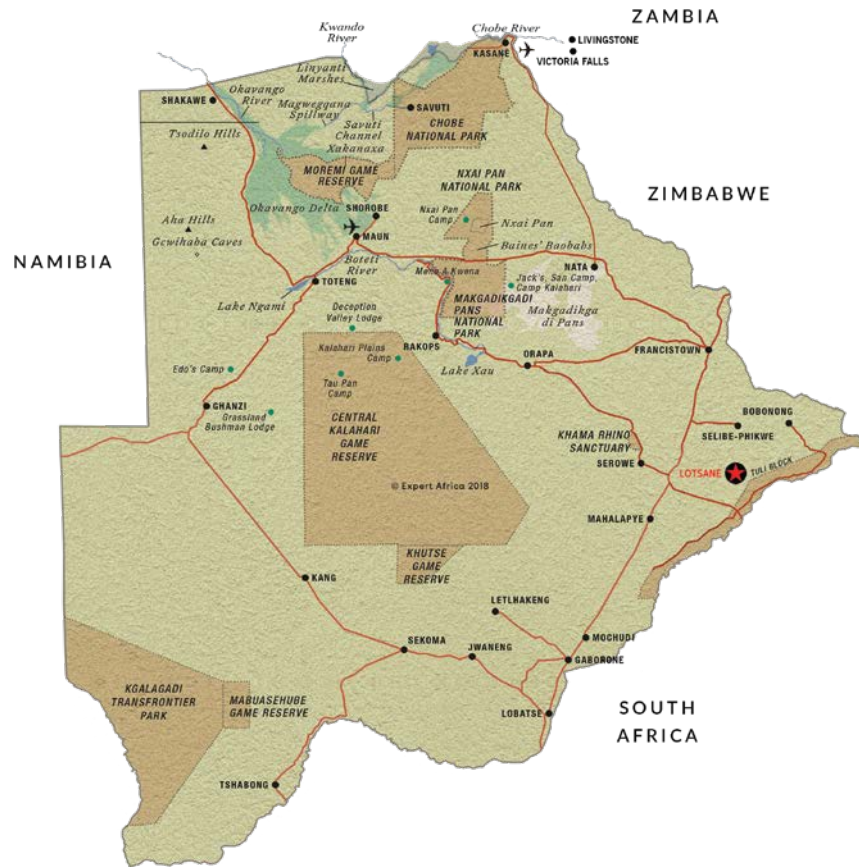
Lotsane Safaris that is a 10,000 hectare privately owned game ranch in the Tuli Block of Botswana, situated a mere 350 kms / 3 hour drive from Gaborone International Airport.

Located at the junction of the mighty Limpopo River and the mighty Lotsane River this property is truly beautiful.

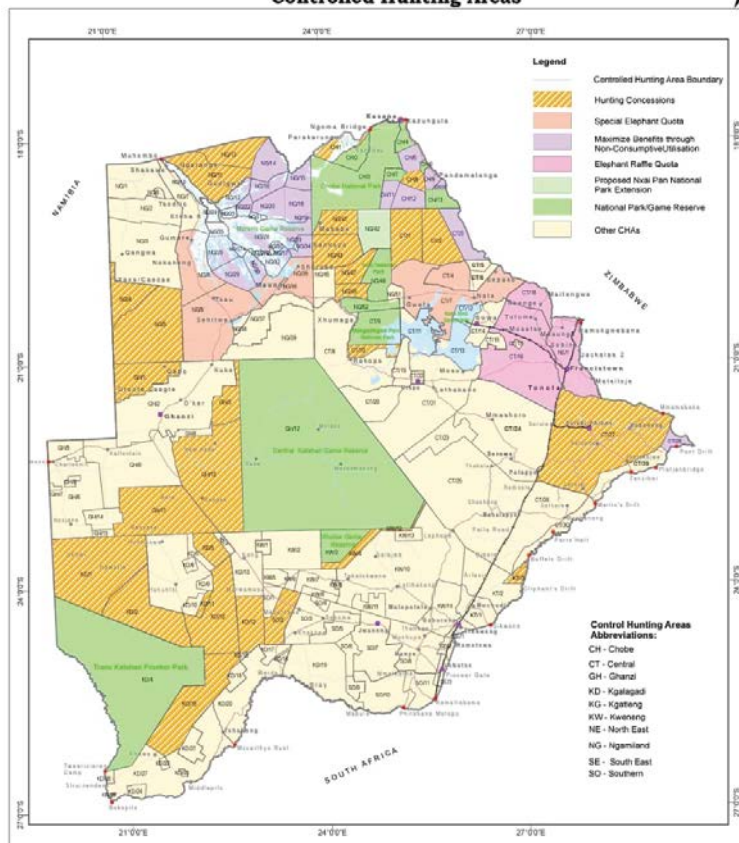
We have very good river fishing which includes species like Yellow Fish, Barbel, Kurper and Carp. The hunting, bird watching and game viewing is world class as is the entire authentic safari experience in the super safe, stunning Botswana.



# MAP OF BOTSWANA



## Controlled Hunting Areas



# GAME VIEWING

Hippo, Crocodile, Elephant, Leopard, Hyena, Jackal, Giraffe, Nyala, Roan, Bushbuck, Springbuck, Warthog, Bushpig, Duiker AND Steenbok



# HUNTING AND FISHING



# BOTSWANA PRICE LIST 2025

ALL PRICES IN USD



## DAILY RATES IN LODGE BASIC ROOMS

Hunter guided 1x1	\$220 per night
Hunter guided 2x1	\$180 per night
Observer	\$120 per night

## DAILY RATES IN LUXURY L-TENT AND SUITES AT LODGE

Hunter guided 1x1	\$250 per night
Hunter guided 2x1	\$200 per night
Observer	\$150 per night

Road transfer from Gaborone and Return \$400

Road transfer from Johannesburg and Return \$600

## TROPHY FEES

Bushbuck	\$1 500
Bushpig	\$400
Duiker	\$250
Eland	\$1 800
Gemsbok	\$800
Impala	\$220
Kudu	\$1 600
Nyala	\$3 000
Red Hartebeest	\$800
Roan	\$6 000
Sable	\$6 000
Waterbuck	\$1 500
Wildebeest (Blue)	\$600
Wildebeest (Gold)	\$2 000
Zebra	\$500

## THE DAILY RATES INCLUDE

- Hunting guide with hunting vehicle.
- Tracker.
- Skinning.
- Accommodation.
- Food, including soft drinks, local wine and beer.
- Laundry service.

## EXTRA CHARGES

- Rifle hire - \$25 per day plus \$10 per bullet.
- Taxidermy fees and trophy export.

EXPERIENCE BEAUTIFUL

# Zimbabwe

## MATETSI ECA EXTENDED CONSERVATION

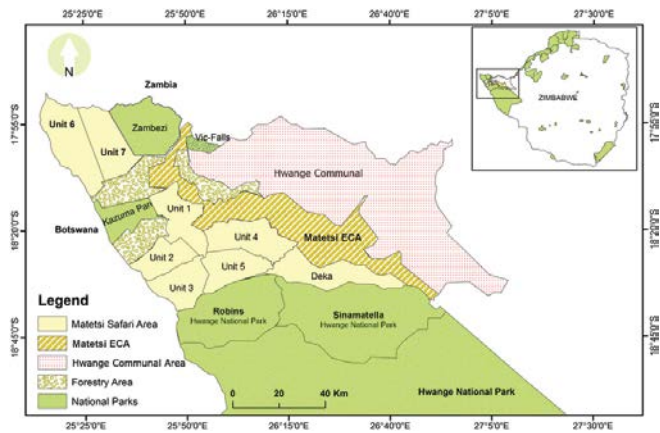
The Matetsi ECA hunting area (Extended Conservation Area) is adjoined directly to the Matetsi units 1 and 4 as illustrated by this map in the light blue shaded section. This is a map of the Matetsi hunting areas adjoined to the Hwange National Park of Zimbabwe that is the country's biggest National Park, the park itself would sit below this map.

The Matetsi ECA is a successful merge of three game farms that are open and unfenced to each other and the Matetsi Units to create a conservancy area/safari area known as the extended conservation area/ECA, extended as in past the boundaries of Matetsi Units 1 and 4 to create this safari area that is around 30 000 hectares in extent. The farms that joined to create this safari area are: Dipangmombe, Kalala and Breakfast, the ECA is also known as Matetsi Unit 8 to the locals although this title is not official.

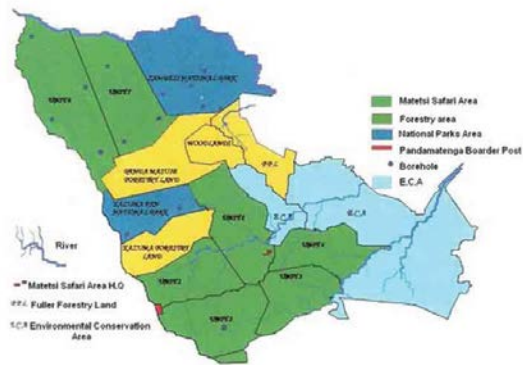
A big difference between the Matetsi ECA and the Matetsi Units is that the ECA allows night hunting of nocturnal species whereas the National Parks Units do not. There is plenty of water in the ECA, game movement is very good very near 100% success rate on all big game species.

The safari lodge is less than one hour's drive from the Victoria Falls International Airport and very close to Hwange National Park, we are able to arrange tours to both the Victoria Falls and the Hwange National Park, no air charter is needed when hunting in Matetsi. There are lots of non-hunter activities available in the nearby Victoria Falls town. When hunting Matetsi you should land at the Victoria Falls Airport. Full mobile phone is available in camp. The annual hunting quota is determined by National Parks and consists of Buffalo, Leopard, Elephant, Lion, Sable, Hippo, Crocodile, Waterbuck, Kudu, Eland, Zebra, Reedbuck, Impala, Warthog, Baboon and Hyena. This is an excellent hunting area and is well known for its big Leopard, full maned Lion and top trophy quality Sable. The camp is very comfortable and has three client chalets each sleeping 2 persons, one chalet is en suite, the other two each have their own bathroom just outside the chalet.

As you can see from the attached map the natural water is plentiful on the ECA.



MAP II: MATETSI SAFARI AREA SHOWING THE SIX HUNTING UNITS, KAZUMA, PANDAMASUIE AND ECA



# ZIMBABWE PRICE LIST 2025

ALL PRICES IN USD



## BUFFALO PLAINSGAME

10 Days - \$1300 per day

Trophy Fee - \$6000

### EXTRAS

\$300 - Pick up and return to airport



## ELEPHANT PLAINSGAME

10 Days - \$1300 per day

Trophy Fee - \$14000

### EXTRAS

Ranger Fee - \$65/ day

Transfer to airport and back - \$300

Cites tag - \$150



## LEOPARD PLAINSGAME

14 Days - \$1400 per day

Trophy Fee - \$6500

### EXTRAS

Ranger Fee - \$65/ day

Cites tag - \$150

Transfer - \$300



## LION

18 Days - \$2500 per day

Trophy Fee - \$32000

### EXTRAS

Ranger - \$65 / day

Transfer - \$300

Bait animals

## ELEPHANT AND BUFFALO + PLAINSGAME (MATETSI)

15 Days - \$1500 per day

Elephant trophy Fee - \$14 000

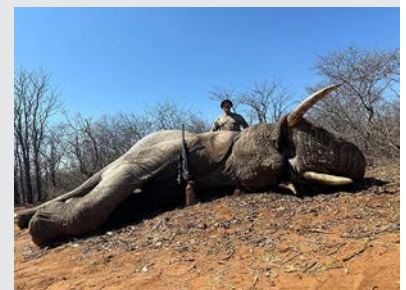
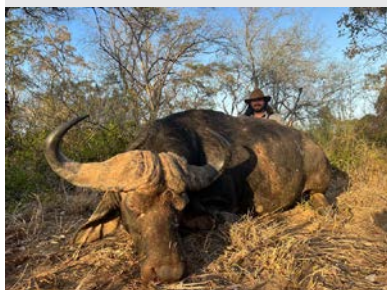
Buffalo trophy fee - \$6 000

### EXTRAS

Ranger Fee - \$65/ day

Transfer to airport and back - \$300

Cites tag - \$150 (elephant)





GONAREZHOU

# Safari Areas

IN SOUTH EASTERN ZIMBABWE

The Gonarezhou Safari areas are hunting areas that are open/un fenced areas adjoined to the Gonarezhou National or the Kruger National Park or the Mozambique National Park, these are massive areas made up of different concessions that form part of the collective Gonarezhou Hunting concessions, the ones that TAS offers are as follows from North to South.

The Sengwe 1 and 2 TTL (Tribal Trust Land) hunting areas are open and adjoined to the Gonarezhou National Park, the Kruger National Park and also Mozambique, Crooks Corner on the Zim side is in our concession and a real hot spot for dagga boys. Sengwe is well known for top trophy quality elephant and buffalo. There are people living in and around the Sengwe areas in a low population density scenario. Hippo and croc are available and on quota in Sengwe.

## SENGWE 1 AND 2:

Sengwe 2 starts at the Sango border post (Zimbabwe/Mozambique) where the Sengwe 2 corridor begins that connects the Gonarezhou National Park and the Kruger National Park forming the Transfrontier National Park, this is a vital channel for elephant and buffalo migration between the national parks, this corridor is within the hunting area, Sengwe 2 continues right down to the Limpopo River that is the International boundary between Zimbabwe and South Africa, this is our open and unfenced boundary with the Kruger National Park that starts at the Mozambique/RSA/Zim border and extends back into our Sengwe 1 boundary starting point at the Buby River that flows into the Limpopo River. Sengwe 1 and 2 merge halfway between the Buby River and Crooks corner boundary along the Limpopo River.

## KWALA-KWALA / SENNGWE 1

Located in the Southernmost tip of Zimbabwe on the Limpopo River that is the border between Kruger Park and Zimbabwe this magnificent location allows free roaming for animals between Kruger and the hunting concession, a truly beautiful place to hunt and can be described as a part of the Kruger Park.

## DUMISA CAMP / SENNGWE 2

Also located on the Nuanetsi River to the South of Malipati another top concession in the southern Lowveld of Zimbabwe.





# GONAREZHOU SAFARI AREA TROPHY ELEPHANT BULL HUNT

ALL PRICES IN USD

<b>HUNT AREA:</b>	GONAREZHOU SAFARI AREA
<b>DAILY RATE:</b>	USD2500
<b>MINIMUM NO. DAYS:</b>	15
<b>OBSERVER PRICE:</b>	USD250 / DAY
<b>TROPHY PRICE/S:</b>	Less than 50lbs – USD22000 50-59lbs - USD24000 60-69lbs – USD26000 70-79lbs – USD30000 80+lbs – USD35000 Buffalo - \$6500 Hippo - \$5500 Croc - \$5500



## THE DAILY RATES INCLUDE

- Hunting guide with hunting vehicle.
- Tracker.
- Skinning.
- Accommodation.
- Food, including soft drinks, local wine and beer.
- Laundry service.

## EXTRA CHARGES (GONAREZHOU AND MATETSI HUNTS)

- 2% Z.T.A. levy on daily rates
- 4% levy on trophy fees
- Road transfers from Bulawayo to Gonarezhou hunting area and back in hunting vehicle - \$500
- Road transfers from Bulawayo to Gonarezhou hunting area and back in luxury vehicle - \$1000
- Road transfer from Victoria Falls Airport to Matetsi hunting area and back \$300
- Cites Tags – Crocodile / Elephant each - \$250
- Ivory registration fee - \$150
- WiFi fee - \$25 per day
- Field preparation and transport of trophies - \$500
- National Parks game scout per day - \$65 on Elephant, Leopard and Lion hunts
- Pre & Post hunt accommodation
- Gratuities
- Rifle hire - \$25 per day plus \$10 per bullet.
- Taxidermy fees and trophy export.



## TERMS OF BUSINESS

- 50% of the daily rates are due when the hunt is booked to confirm your booking, to confirm your dates and quota allocation.
- The balance of 50% of daily rates to reflect in our account no later than 21 days before the start of the hunt.
- Trophy fees are payable in cash at the end of the hunt OR trophy fees can be paid up-front before the start of the hunt via bank transfer.
- Unused trophy fees paid in advance will be refunded within 21 days after the hunt if animal/s are not hunted.



# ZIMBABWE SPECIES PRICE LIST 2025

ALL PRICES IN USD

## SPECIES PRICE (\$USD) - Gonarezhou and Matetsi

Baboon	\$80
Buffalo Bull (Matetsi)	\$6 000
Buffalo Bull (Gonarezhou)	\$6 500
Bushbuck	\$900
Bush pig	\$400
Caracal	\$500
Civet cat	\$500
Crocodile	\$5 500
Duiker	\$350
Eland	\$1 500
Elephant Bull (Matetsi)	\$14 000
Elephant bull (Gonarezhou) Less than 50lbs	\$22 000
Elephant bull (Gonarezhou) 50-59lbs	\$24 000
Elephant bull (Gonarezhou) 60-69lbs	\$26 000
Elephant bull (Gonarezhou) 70-79lbs	\$30 000
Elephant bull (Gonarezhou) 80+lbs	\$35 000
Elephant Tuskless	\$5 000
Genet	\$250
Giraffe	\$1 800
Grysbok	\$350
Hippo	\$5 500
Hyena	\$800
Impala	\$350
Impala Bait	\$250
Jackal	\$250
Klipspringer	\$700
Kudu	\$1 500
Leopard	\$6 500
Lion	\$32 000
Mongoose	\$150
Porcupine	\$300
Reedbuck	\$900
Sable	\$6 500
Serval	\$500
Vervet Monkey	\$75
Warthog	\$400
Waterbuck	\$1 800
Wild Cat	\$250
Zebra	\$1 200

FARMS FOR SALE IN BOTSWANA

# Lotsane Safaris Lifestyle Estate



I would like to introduce you to Lotsane Safaris Lifestyle Estate in Botswana, a project I have been working on full time for the last 3 years. Lotsane Safaris is located in the Tuli Block of Botswana, you can see our location on the attached map. Lotsane Safaris is essentially a game ranch of 10,000 hectares / 25,000 acres, we have 3 seasonal rivers flowing through the property, we have built a luxury lodge consisting of 14 guest rooms including 3 suites and a luxury tented camp, the lodge and tents have bespoke finishes and were constructed at the highest standard, please look at the attached video and photos.

Lotsane Safaris is a private plains game hunting ranch catering to the international hunting market, we have a large number of resident species on the property, such as hippo, crocodile, leopard, hyena, nyala, giraffe, bushbuck, sable, roan, kudu, eland, oryx, warthog, waterbuck, impala, springbok and more, we have migratory elephant and have had lion as occasional visitors to the property, the bird life and fishing is excellent here.

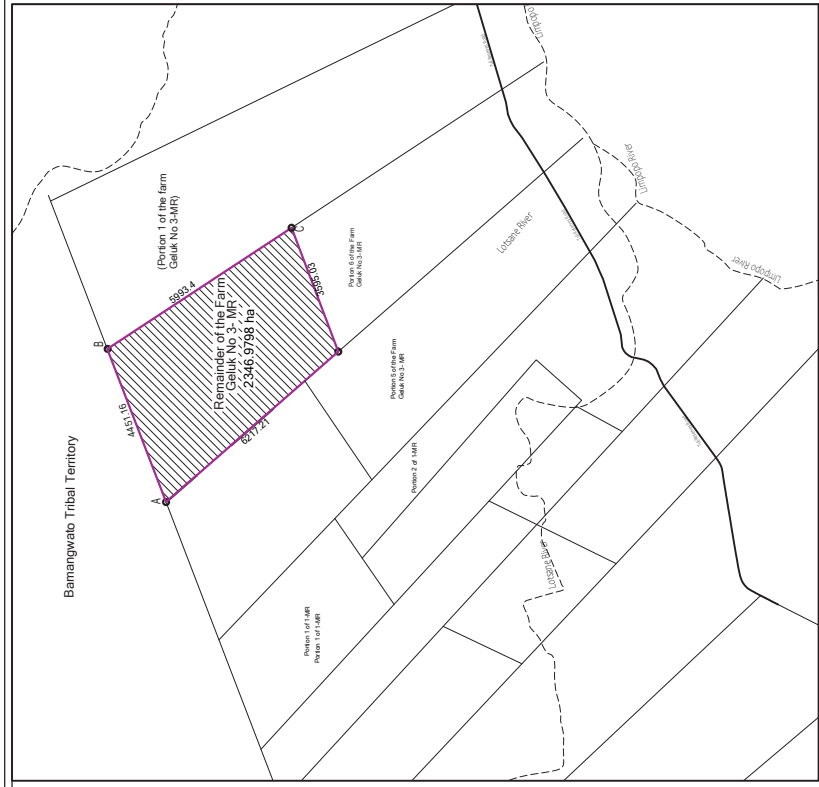
Our property is full title/full ownership of land, we have subdivided a portion of our property into 5 farms of around 450 hectares each that we intend to sell to clients/friends that would like to own a farm in Africa/in Botswana that is truly an amazing country, super safe, wild and peaceful. Please see the attached subdivision map and map of Lotsane showing the entire property and the 5 farms we have for sale that are highlighted and are to the north east of the ranch, each farm is on its own full title deed, this is not a share block offer, you own your farm outright, buying your 450 hectare farm inside Lotsane Lifestyle Estate would allow you traversing rights across the entire 10,000+ hectare property including hunting rights, the purchase of your farm comes with an annual hunting quota and the right to build your own home on your own farm, a visitors home and amenities can also be built plus you have access to the main lodge, the tented camp, the bush camp, three swimming pools and camp sites.

Investment at this level into Botswana would qualify you to apply for residence in the country if you wish to do so, in terms of this purchase you would be entitled to live on your farm if you choose to do so or have your farm as a holiday farm, we have building packages available and are able to assist you in building your dream home if you would like us to do so although you are not obliged to have us build for you, you could also do your own building if you prefer. Once more, this is not a share block or share sale or timeshare investment, you own your own farm that is part of Lotsane Lifestyle Estate, you can sell your farm and home at anytime if you choose to do so, if you choose to use your home as a holiday home only and would like to rent your home out to holiday makers when you are not here we will handle the marketing, maintenance and rental of your home on your behalf.

There is a purchase price payable for the land and a monthly (or annual) maintenance levy payable to keep the ranch running and all its animals healthy, if this is something you would like to consider please contact me for more information, most of you know me and can email, whats app or call me directly, if you are considering buying a farm in Africa look no further than Botswana, a truly amazing place.

For those of you that are not on the market for a farm but would like to come to Lotsane for hunting please feel free to email me and let's get your hunt booked, your entire family will love the luxury, peace and tranquility that we can offer.





**SUBDIVISION OF THE REMAINDER OF FARM GELUK 3 MR**

TULUOK  
CENTRAL ADMINISTRATIVE DISTRICT  
PAREPETAHANE

**LEGEND**

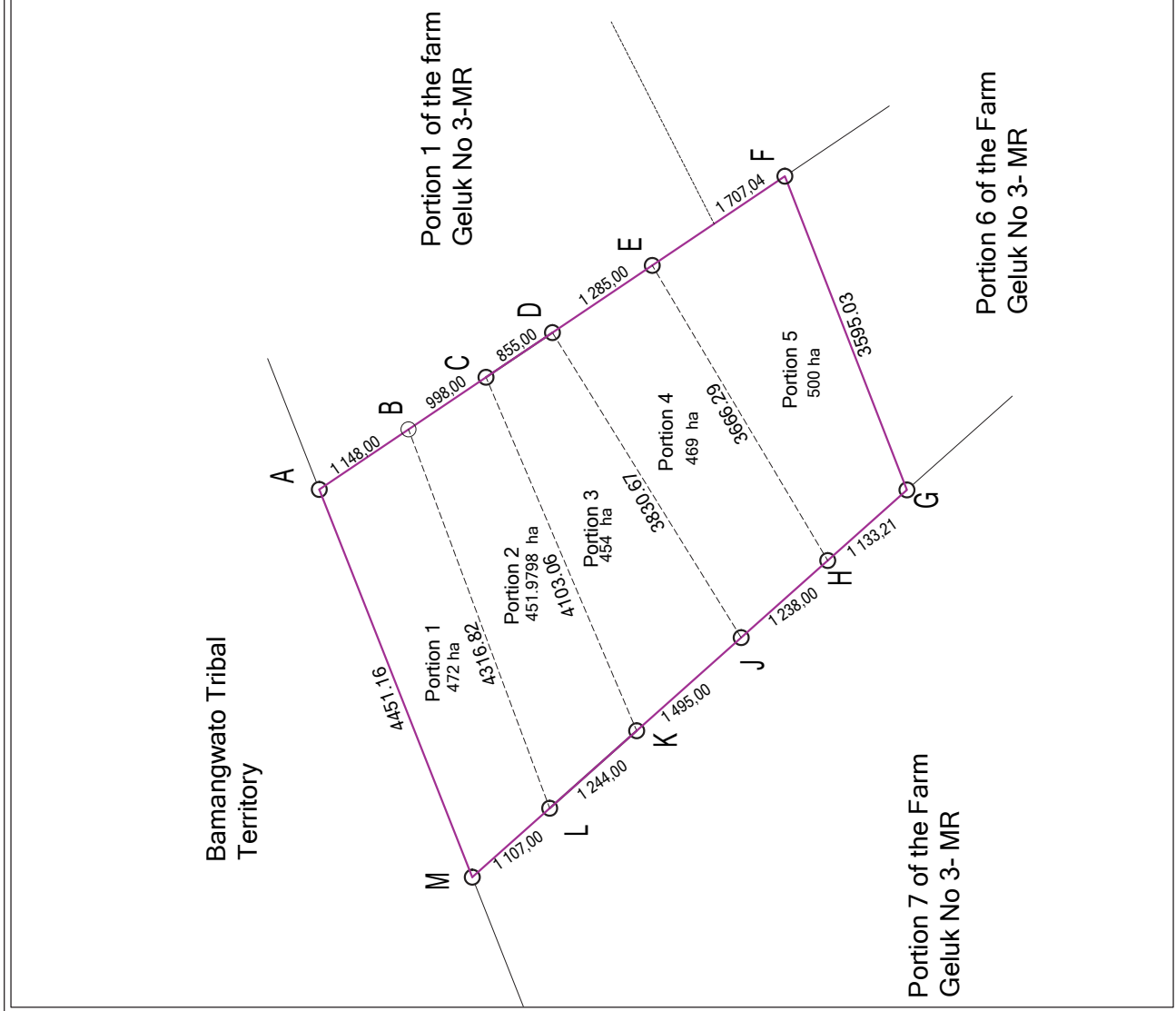
- Solid line: Boundary
- Dashed line: Access Road
- Dotted line: Station line
- Thin solid line: Heighting symbol
- Thick solid line: Stream/river
- Thin solid line: Fences
- Thin solid line: Other line

**SCALE**

1:10000

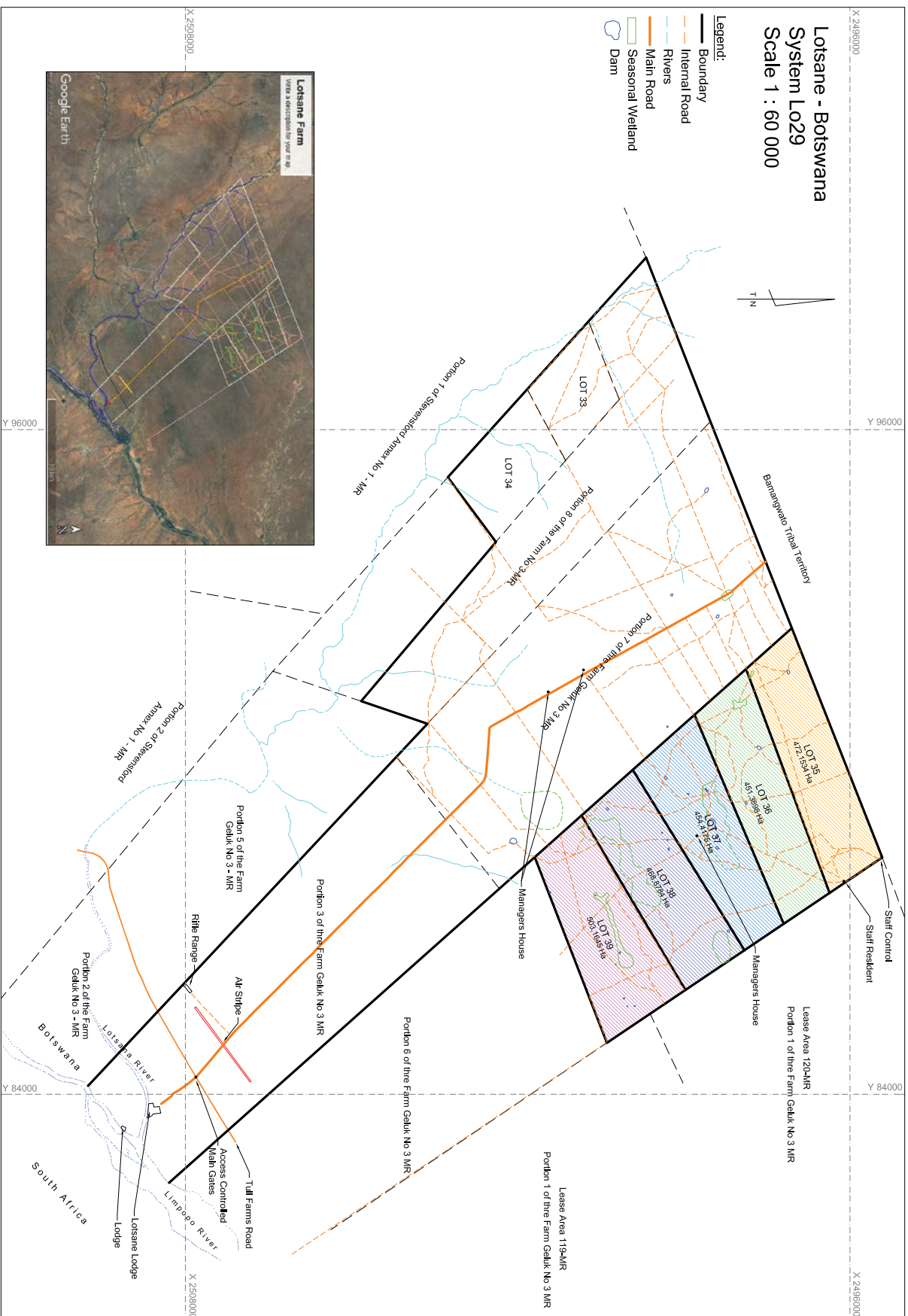
**CONSULTANT**

**ICONIC**  
ADMINISTRATIVE Surveying Services



# Lotsane - Botswana System Lo29 Scale 1 : 60 000

- Legend:
- Boundary
  - Internal Road
  - Rivers
  - Main Road
  - Seasonal Wetland
  - Dam





**LOTSANE**  
SAFARIS



**EMAIL: [carl@takeaimsafaris.com](mailto:carl@takeaimsafaris.com) | [carljkr@gmail.com](mailto:carljkr@gmail.com)**

**WEBSITE: [www.takeaimsafaris.com](http://www.takeaimsafaris.com)**

**CARL: +61 475 394 175 or +27 82 749 1747**

**PETRA: +49 1512 2844938**